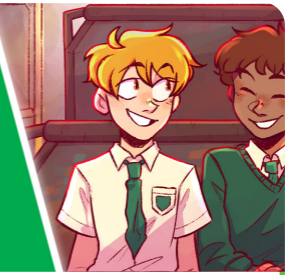




School Service Changes



Term 1 2023

Services often change at the start of the school year. These changes include School Specials, as well as regular routes that service schools in the area.

These changes are made in order to offer the best possible service across the network.

Students intending to travel to school via public transport should:

- Check transperth.wa.gov.au for information. As services change, website information will be updated
- Plan your journey prior to the start of school. The JourneyPlanner will be updated with the new school services **two weeks prior to the start of school**. Remember to change the date in the JourneyPlanner to the first day of school
- Not every school will undergo changes, however all students should plan their journey before starting the new school year.

For Assistance:

transperth.wa.gov.au

Transperth InfoLine 13 62 13 (TIS: 13 14 50)

Hearing or speech impaired? Call via NRS 133 677



Public Transport
Authority

